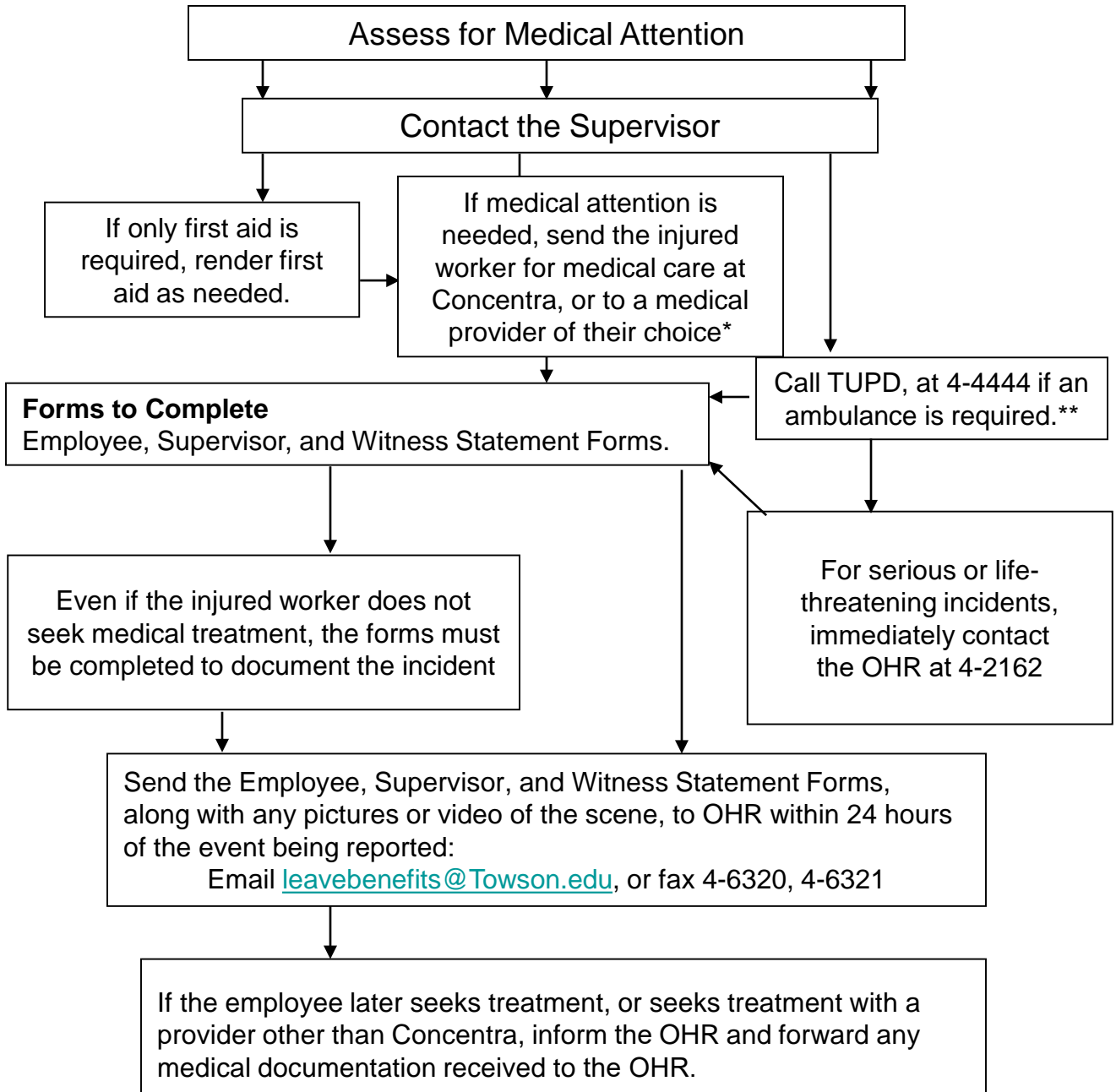


What to do if an Employee Suffers a Work Injury or Incident



Questions - call the OHR at 410-704-2162

*Employees may treat with a provider of their choice. Employees who treat with a provider of their choice must follow up with Concentra or another facility approved by the university's Workers' Compensation insurance provider.

** Employees sent to the ER by ambulance must follow up with Concentra or another facility approved by the university's Workers' Compensation insurance provider.