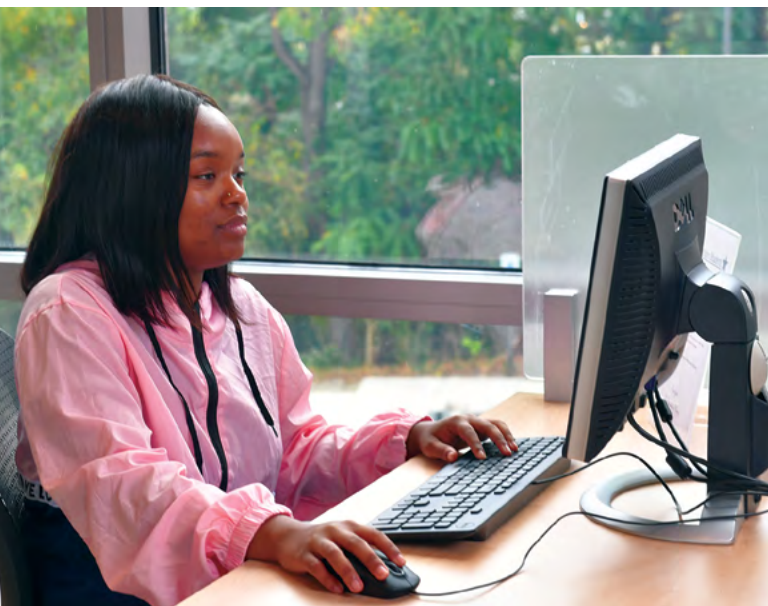


CAREER ROAD MAP **YEAR 1**



KNOWLEDGE

- Schedule a “My First Appointment” in Handshake with a career coach and explore career communities.
- Research majors using department websites.
- Check out the “What Can I Do With This Major?” workshop and career resources by major pages on the Career Center website.
- Take the Traitify assessment to match you to careers based on your personality.
- Take the CliftonStrengths assessment during orientation.

NETWORK

- Meet with your FYE adviser to discuss your academic plan.
- Attend an involvement fair to learn about and consider joining student organizations.

CAREER READY

- Draft your resume and visit Express Hours to review it with a career peer adviser.
- Activate Handshake, fill out your profile and explore jobs and internships.

EXPERIENCE

- Participate in one-day internships through the Tiger LEAP Job Shadowing Program.
- Sign up and attend Impact TU or other volunteer activities.
- Attend the Part-Time and On-Campus Job Fair to find work on campus or community involvement opportunities.
- Take classes in different disciplines to determine your interests.
- Take advantage of Career Center-sponsored employer site visits.

